

**Year 6 Residential**  
**Woodrow High House - Amersham**  
**29th June- 1st July 2026**

# Stunning surroundings...





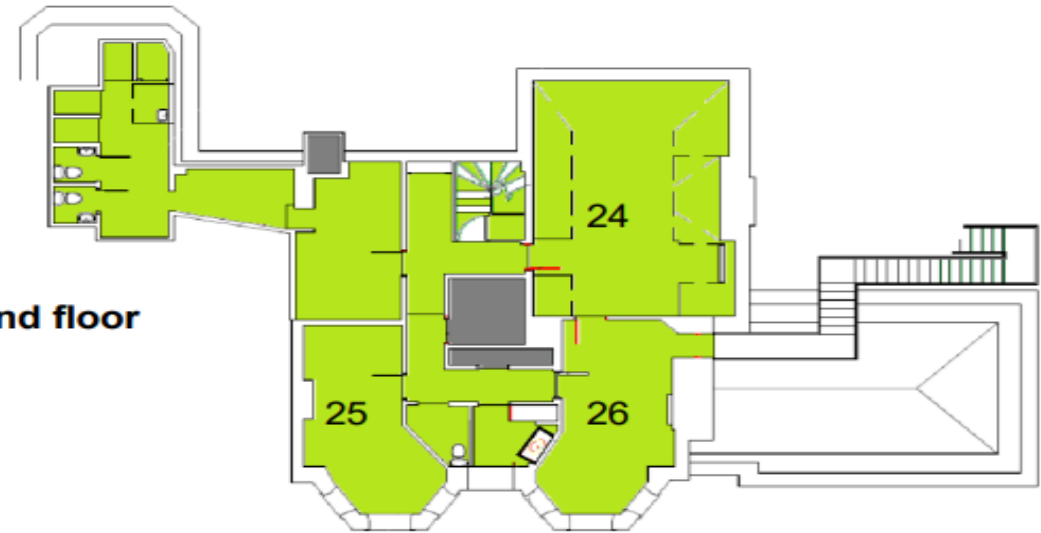
# Sleeping accommodation...



## Group House Map

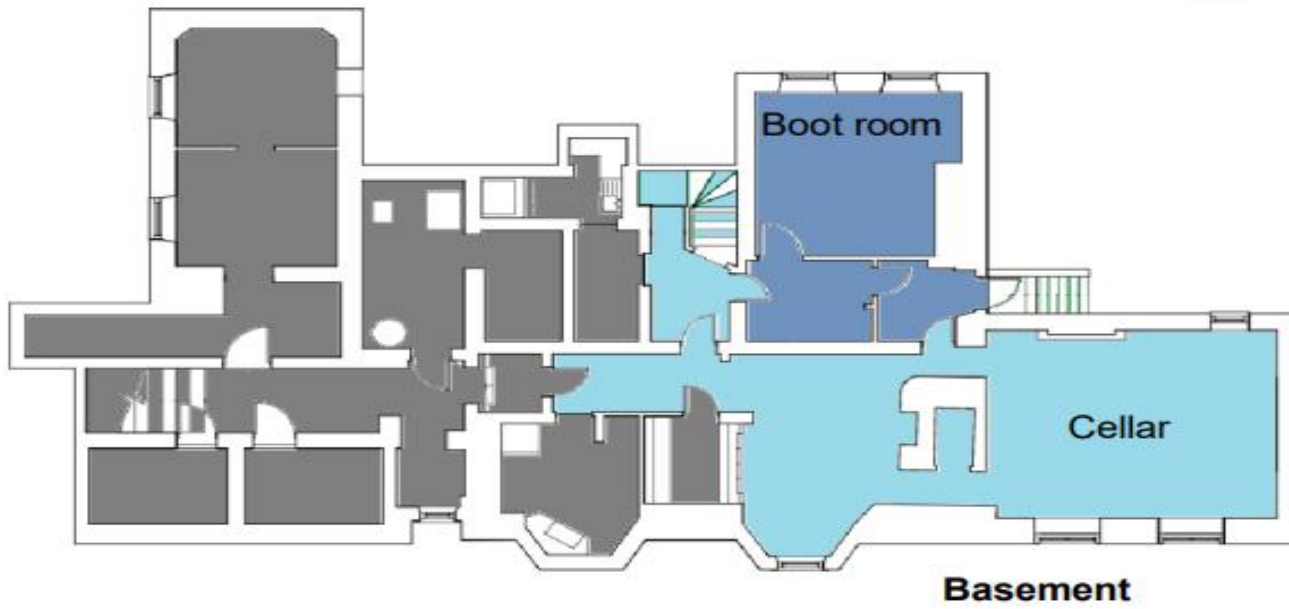
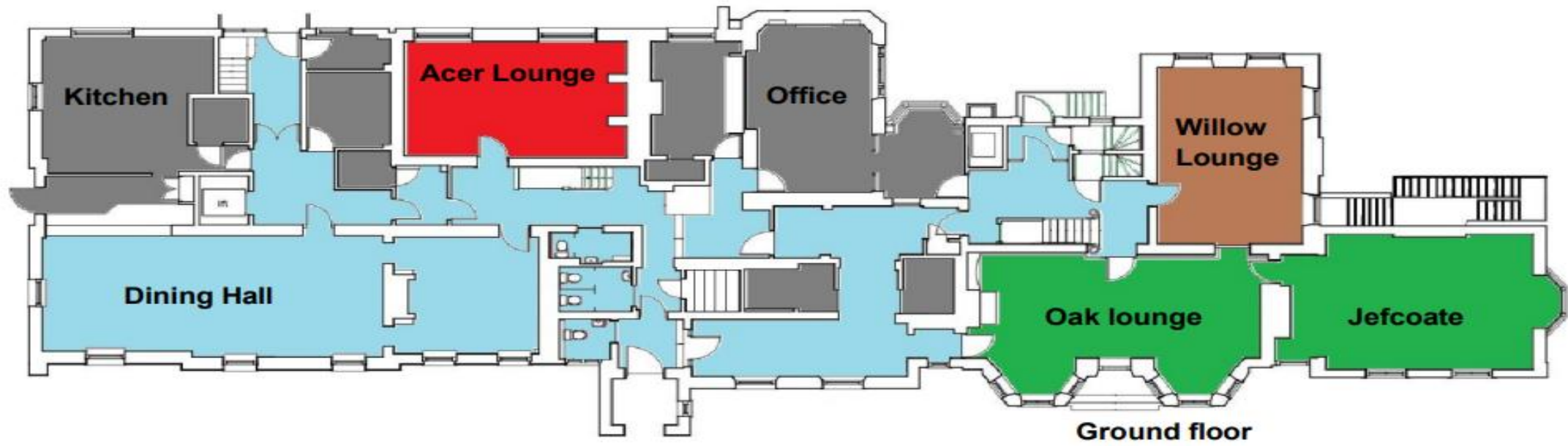
-  Buttercup
-  Lavender
-  Sage
-  Heather
-  Out of bounds

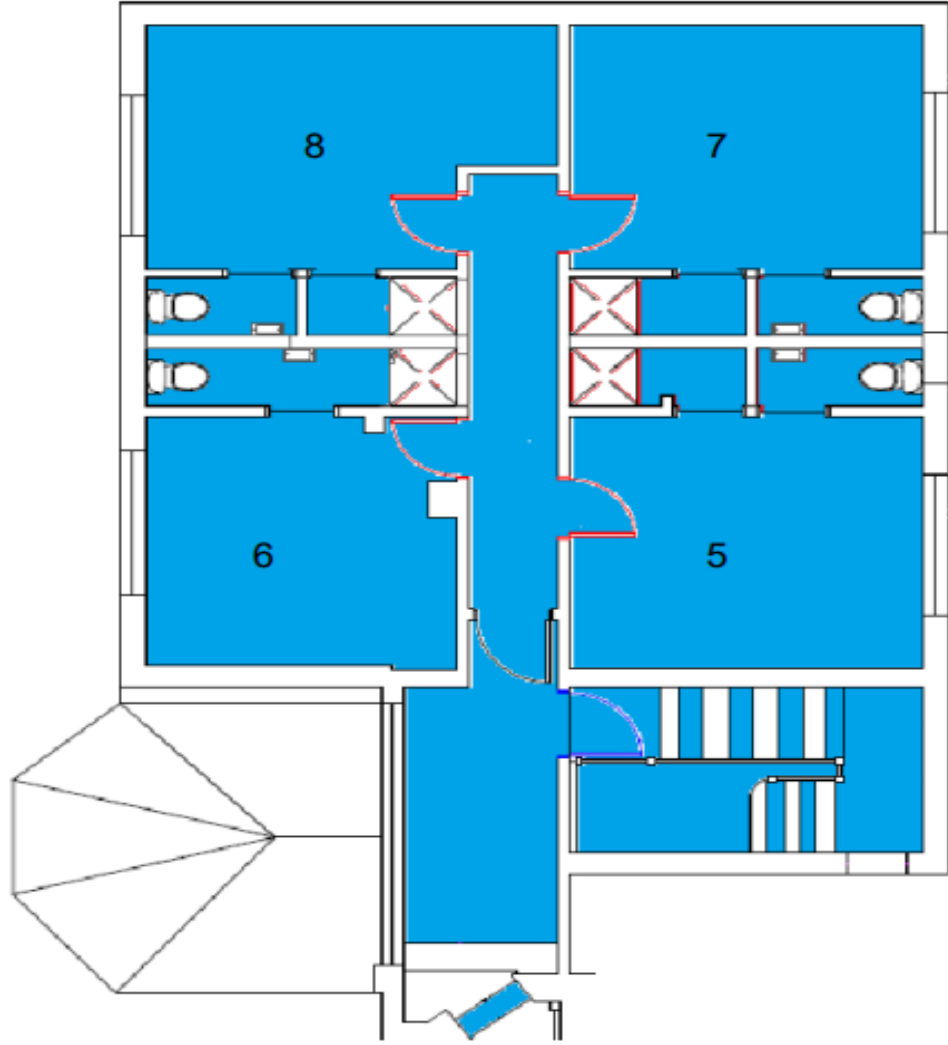
2nd floor



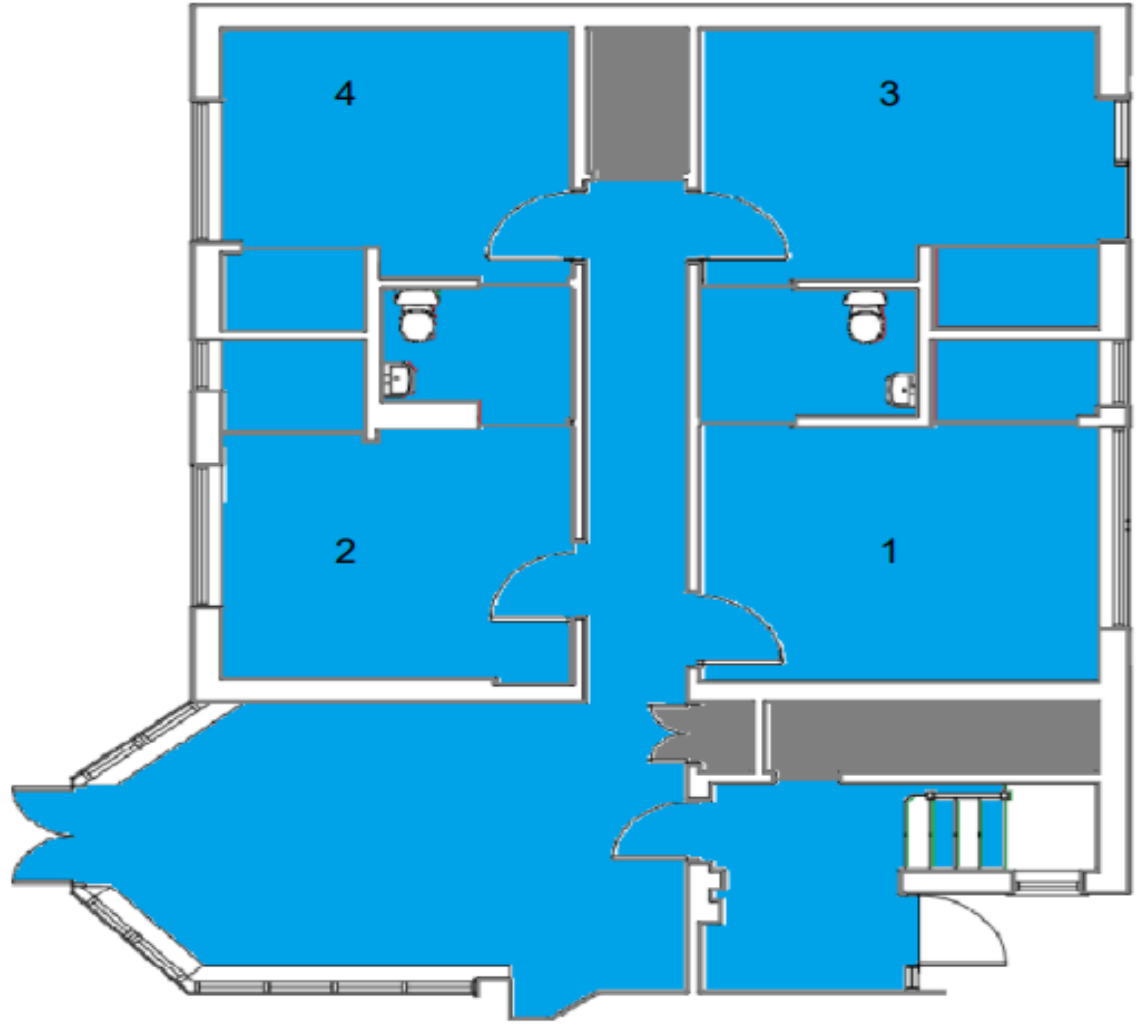
1st floor







**Wing 1st floor**



**Wing ground floor**

# Meal times...



# WEEKLY MENU

BREAKFAST	TUESDAY	WEDNESDAY	THURSDAY	FRIDAY	SATURDAY	SUNDAY
<b>HYDRATION</b>	Mixed fruit water	Citrus burst water	Mixed fruit water	Citrus burst water	Mixed fruit water	Mixed fruit water
<b>HOT ITEMS</b>	Scrambled egg	Breakfast bap Egg, bacon	Belgium warm waffle American style pancake With toppings	Grilled bacon Baked beans Vegetarian sausages Grilled tomatoes Boiled egg	Grilled sausages Baked beans Vegetarian sausages Grilled tomatoes Boiled egg	Shakshuka with baked eggs
<b>DAILY SPECIAL</b>	Toasted muffins	Hash brown	Boiled egg	Hash Brown	Hash brown	Grilled bacon or Vegetarian sausage
<b>DAILY BREAKFAST ITEMS</b>	Cereal Bar Yoghurt Granola Toast Preserves	Cereal Bar Yoghurt Granola Toast Preserves	Cereal Bar Yoghurt Granola Toast Preserves	Cereal Bar Yoghurt Granola Toast Preserves	Cereal Bar Yoghurt Granola Toast Preserves	Cereal Bar Yoghurt Granola Toast Preserves
<b>FRESH FRUIT</b>	Sliced melons and pineapple  Whole fruit selection	Sliced grapefruit and orange  Whole fruit selection	Sliced melons and pineapple  Whole fruit selection	Sliced grapefruit and orange  Whole fruit selection	Sliced grapefruit and orange  Whole fruit selection	Sliced melons and pineapple  Whole fruit selection

# The activities...



The  
Shop  
(£5-£10 in  
a named  
purse/  
wallet)



### Things you'll need:

- A packed lunch for the first day (if you are entitled to free school meals, a kitchen packed lunch will be provided)
- Toiletries in a toiletry bag (e.g. toothbrush, toothpaste, soap, flannel, roll-on deodorant- no aerosols )
- A bath towel
- Old clothes for activity sessions (e.g. long-sleeved t-shirts/shirts, trousers/leggings and closed-toe shoes/ trainers)
- Indoor shoes (e.g. clean trainers or slippers)
- Waterproof clothing (jacket, trousers and wellington boots)
- Comfortable and warm clothes for other times
- Pyjamas and underwear
- Large plastic bag for dirty clothes
- Sunglasses, sun cream and hat (hopefully!) or gloves, hat and scarf if needed
- A WATER BOTTLE

### Useful items:

- Books, playing cards and other quiet activities e.g. Uno, Top Trumps, colouring)
- NO MOBILE PHONES OR ELECTRONIC DEVICES

**LABEL EVERYTHING**- including underwear!

# DIETARY NEEDS:

We will need to know of any dietary needs e.g. any known food allergies or preferences such as vegetarian/halal/vegan. PLEASE INDICATE THIS ON THE FORM PROVIDED.

Medicines are to be placed in a sealed bag, each item clearly labelled with child's name along with written instructions for administration (e.g. brown inhaler 2 puffs morning and evening using the spacer. Blue inhaler when wheezy).

These are to be handed to Miss Timberlake/Miss Danilewicz on the morning of departure.

Please sign and return the form giving permission for Calpol to be administered should the need arise and indicating any dietary needs by FRIDAY 8th MAY 2026.

# On the day ...

- ▶ Please arrive at the normal time of 8:40am on Monday 29th June but come via the staff car park entrance by the field. Children should wear their own clothes and NOT school uniform.
- ▶ You will need to sign in all medication with Miss Timberlake or Miss Danilewicz on arrival
- ▶ Please ensure your child has everything they need - please refer to the printed copy of the kit list. This information is also available on the school website.
- ▶ We will be leaving school at approximately 10am. The coach will be parked on Prebendal Avenue if you want to come and wave us off. (You will not be able to wait in school before this time though)
- ▶ Daily updates will be posted on the school website.
- ▶ We will arrive back in school on Wednesday 1st July at approximately 2:45pm. Please collect your child from the usual Year 5/6 collection point (the staff car park by the field)
- ▶ All children must be collected and will not be allowed to walk by themselves.
- ▶ **Mobile phones must be left at home.**

Any questions?